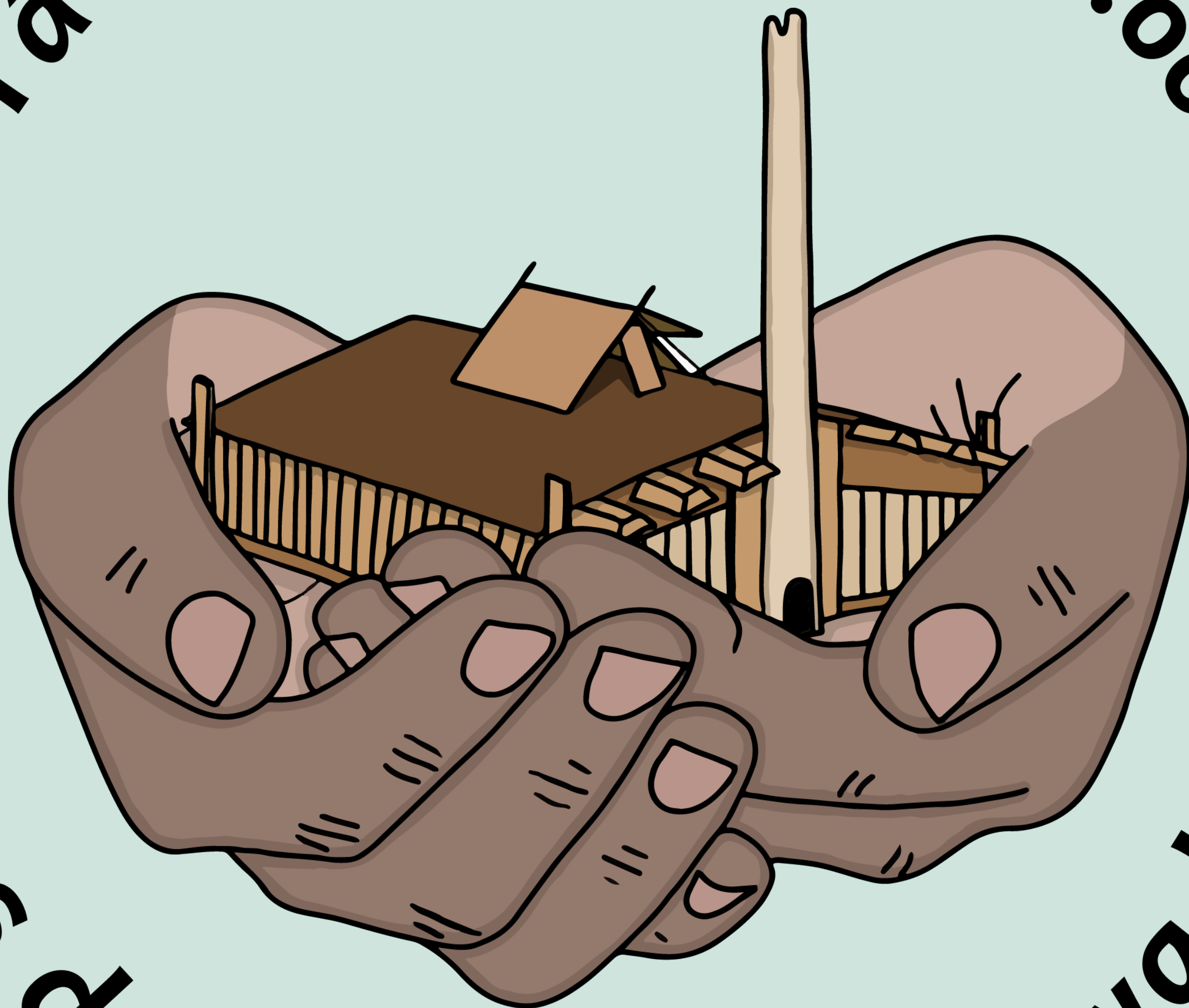


Yá ax eenx sateeyi ku.oo



hns du káx yánde akkwadéil

This message is brought to you by the
AKPIRG/NPACF Lingít Language
Panel, with X'unei Lance Twitchell and
Aandaxltín Stephanie Tripp



ALASKA NATIVE
TRIBAL HEALTH
CONSORTIUM



AKPIRG
Alaska Public Interest Research Group



COMMUNITY FUND