



ANTHC Clinical ECHO Series

Approved Provider Statements:

ANTHC is accredited by the Washington State Medical Association to provide continuing medical education for physicians.


ANTHC is approved as a provider of nursing continuing professional development by the Montana Nurses Association, an accredited approver with distinction by the American Nurses Credentialing Center's Commission on Accreditation.

AKPhA is accredited by the Accreditation Council for Pharmacy Education as a provider of Continuing Pharmacy Education.

Contact Hours:

ANTHC designates this Live Activity for a maximum of 1 *AMA PRA Category 1 Credit(s)*™ per session. Physicians should claim only the credit commensurate with the extent of their participation in the activity.

ANTHC designates this activity as meeting the criteria for one nursing contact hour credit for each hour of participation up to a maximum of 1 hour(s)/session.

 The Alaska Pharmacists Association (AKPhA) is accredited by the Accreditation Council for Pharmacy Education as a provider of continuing pharmacy education. Through a Joint Providership, ANTHC and AKPhA designates this pharmacist activity for a maximum of 1 hours(s) per session. To receive CE credit, participants must be included in attendance record of facilitator/virtual format moderator with the NABP e-profile number including MM/DD birthdate, and complete the evaluation or post session survey. CPE credit will be posted to the online CPE Monitor System within 60 days of activity completion. CPE credit is offered at no charge to ANTHC/SCF employees and AKPhA members. Fees may apply to participants not affiliated with either organization.

Approved for 1 CHAP CE

Conflict of Interest Disclosures:

All Presenters and Conference Planners for this activity do not have any relevant relationships or conflict of interests to disclose.

Requirements for Successful Completion:

To receive CE credit be sure you are included in attendance record as directed by the facilitator/session moderator, and complete the course evaluation or post session survey.

For more information contact Jennifer Fielder at jfielder@anthc.org or (907) 729-1387



Introduction to the Addiction Medicine ECHO Series

Ryan Wallace, MD, MPH

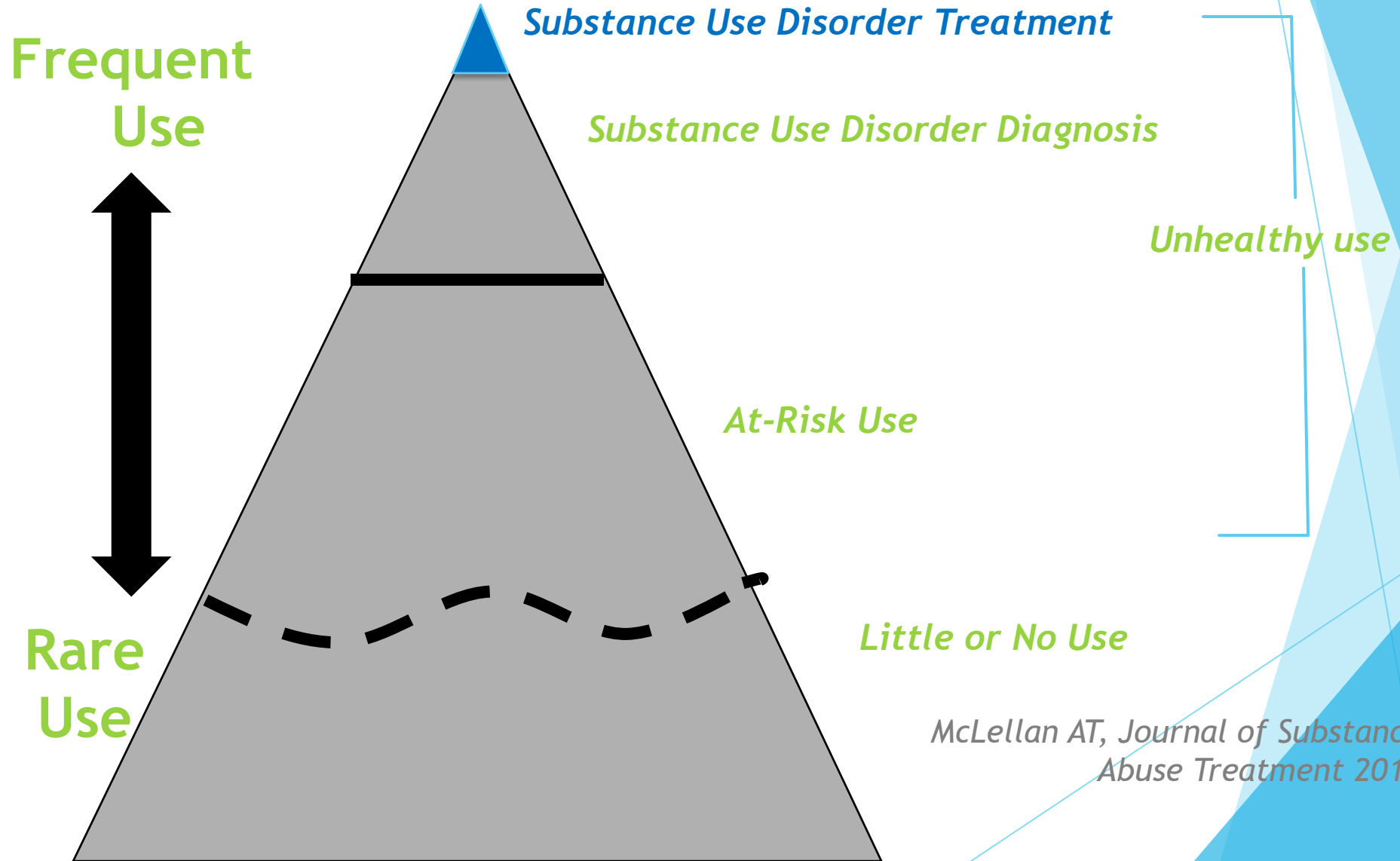
Conflict of Interest Disclosure

- ▶ I have nothing to disclose.

Outline

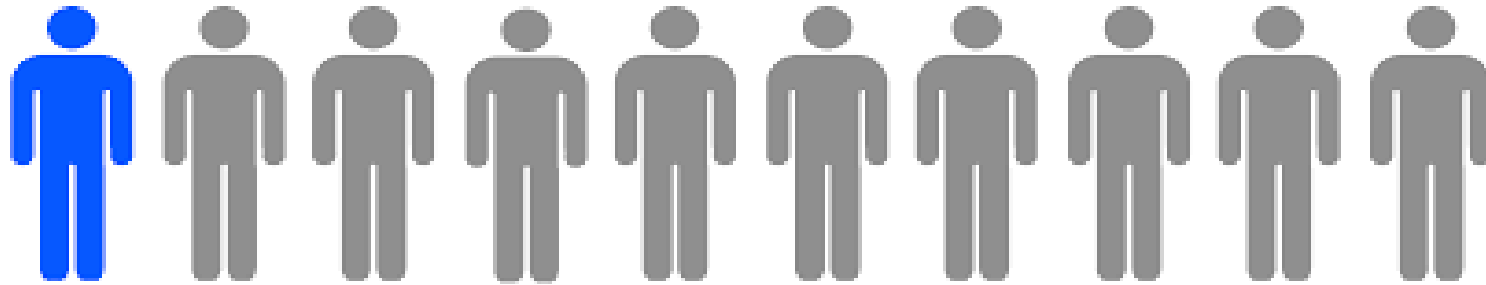
- ▶ The spectrum of substance use
- ▶ The neuroscience of addiction
- ▶ The importance of terminology

Spectrum of substance use



The Gap in Treatment

10% of people who have a SUD are able to access treatment.

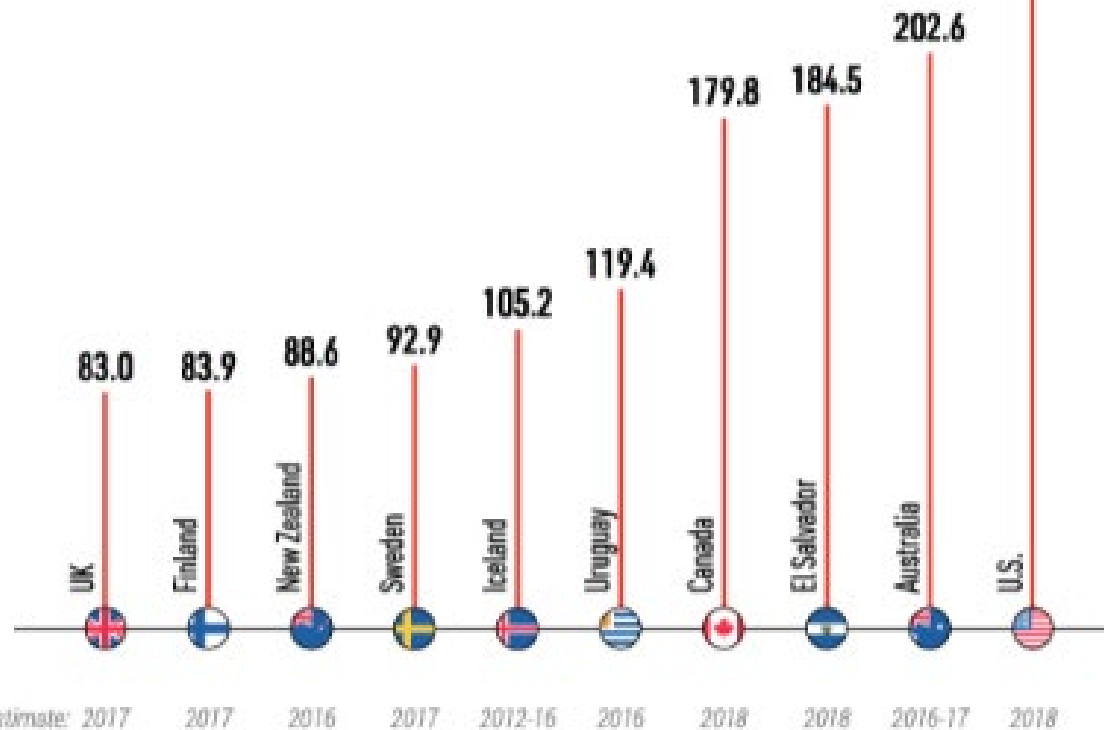


Results from the 2015 National Survey on Drug Use and Health: Detailed tables. Rockville, MD: SAMHSA

Top 10 Countries by Drug-related Mortality Rate

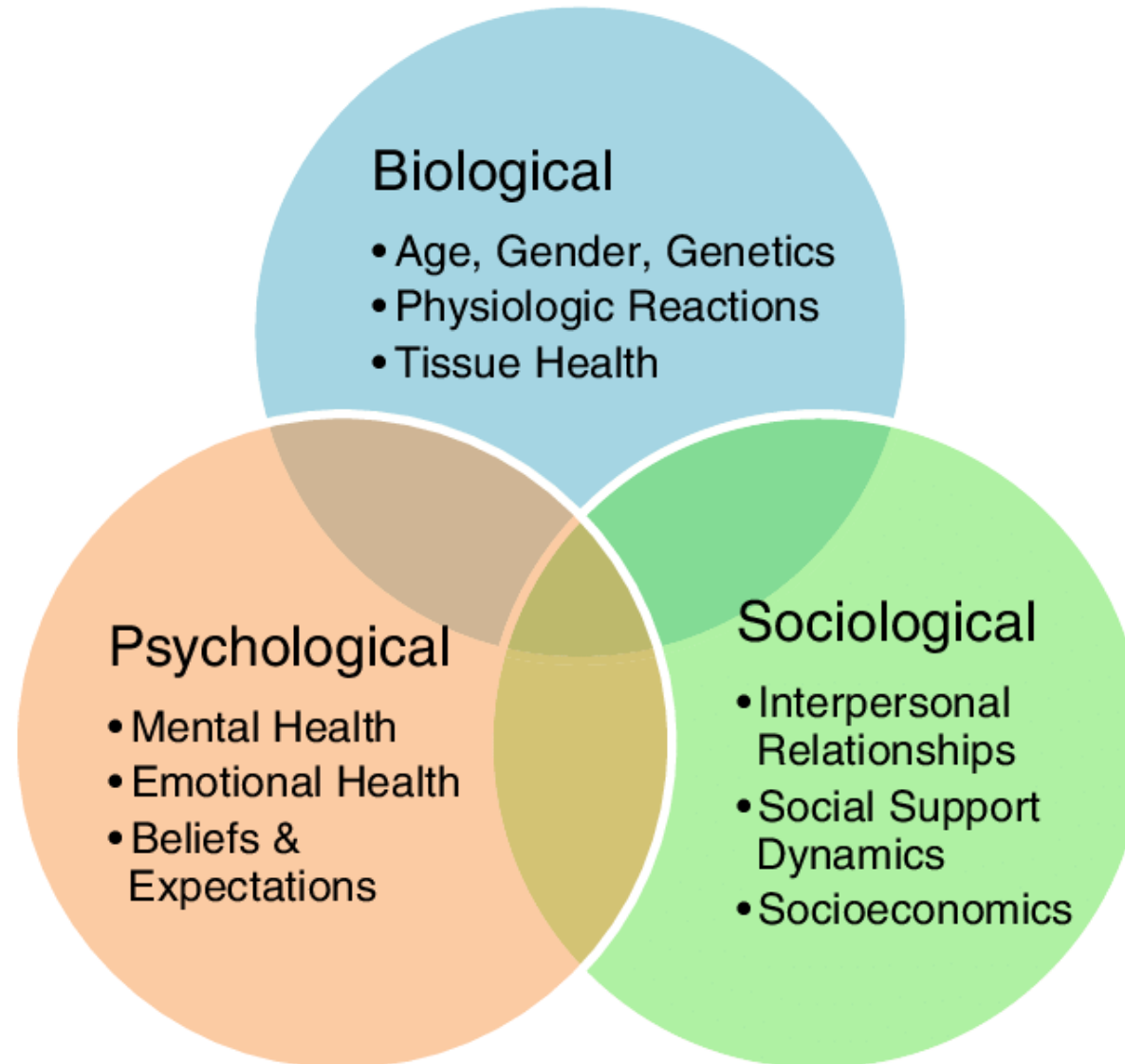
(Per 1M, aged 15-64)

The U.S. had the highest proportion of drug-related deaths per million people in 2018. ▶ **314.5**



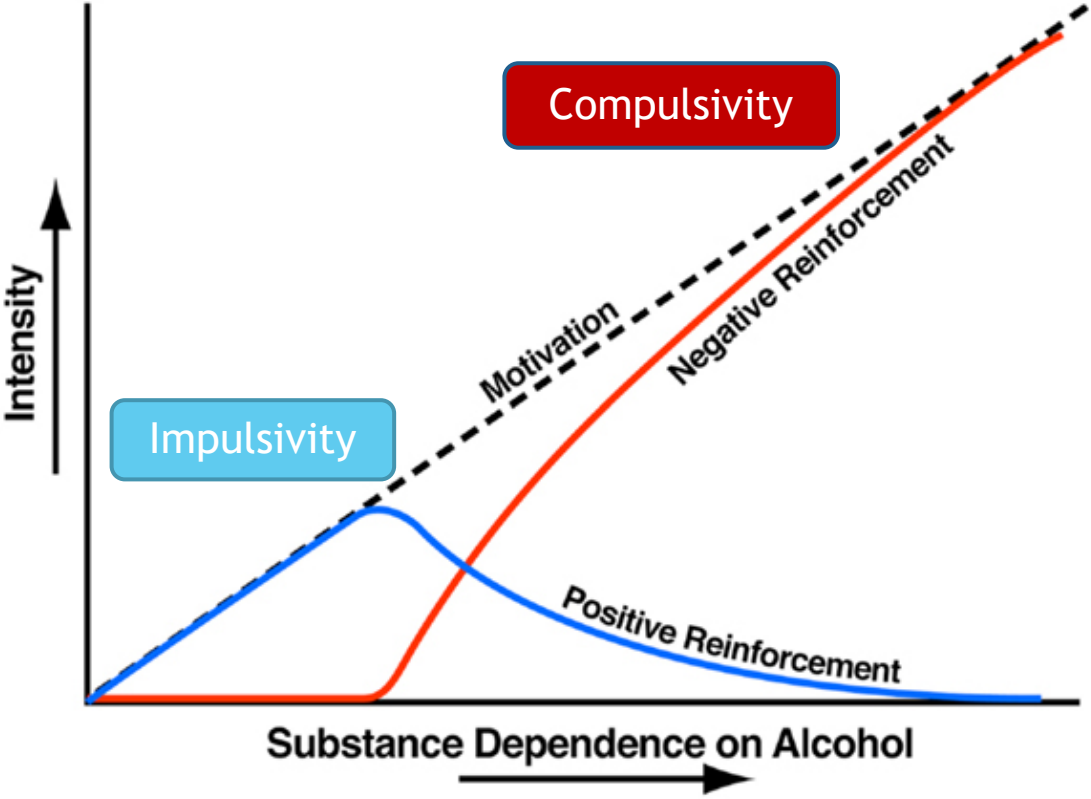
Note: Source compiles the number of deaths across years for some countries
Source: UNODC World Drug Report 2020, Centers for Disease Control and Prevention

The Biopsychosocial model of substance misuse

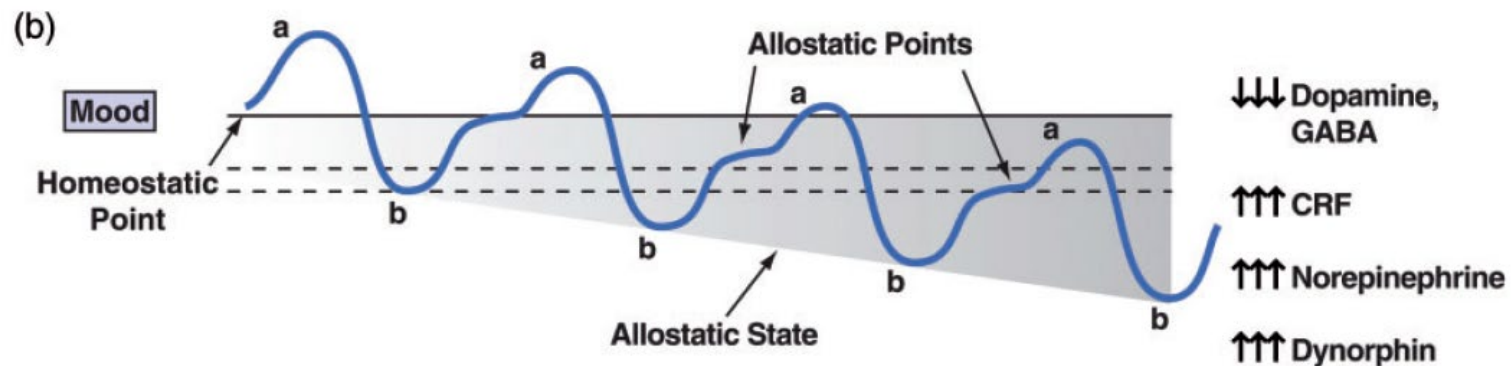
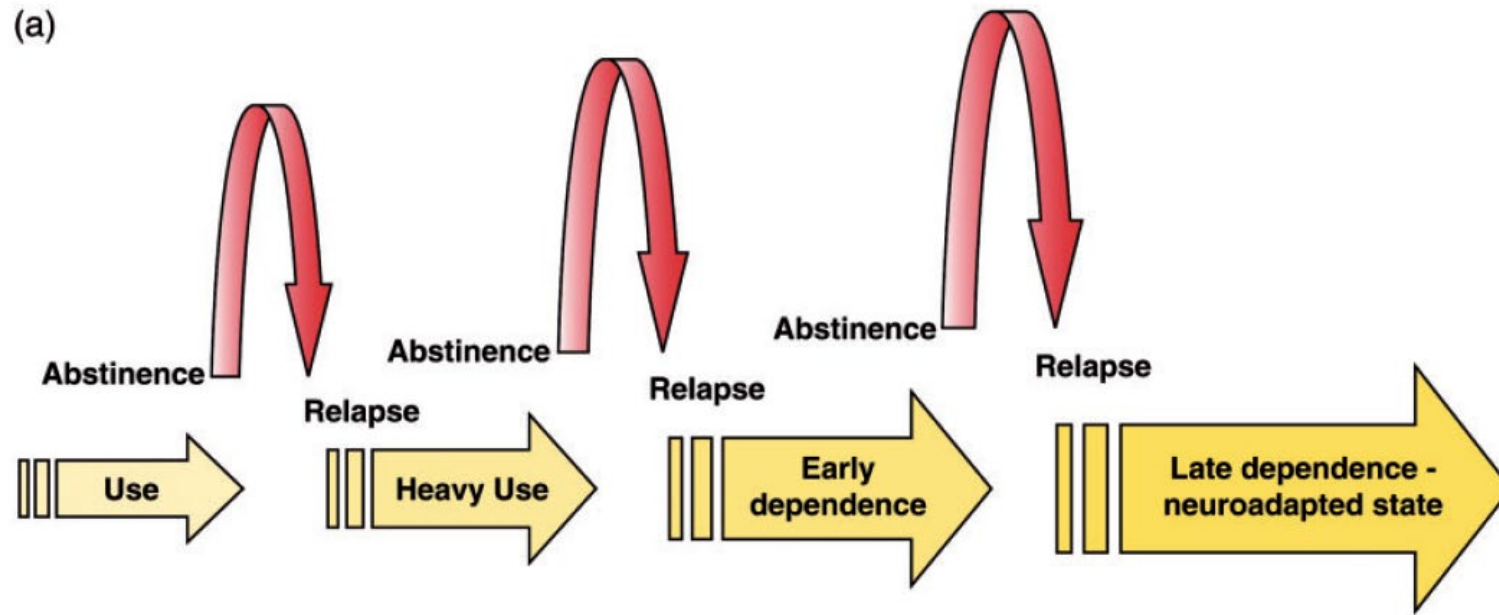


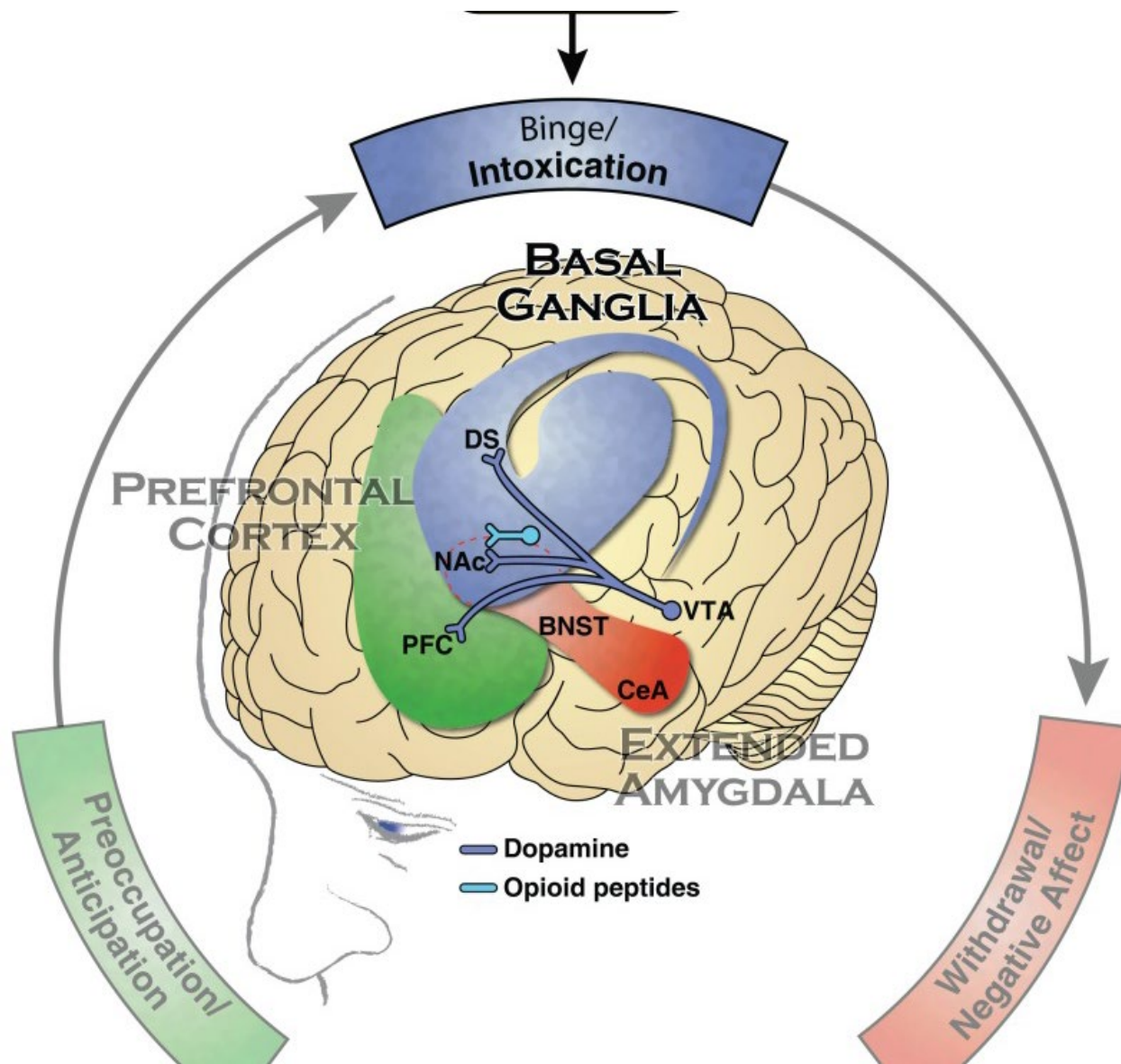


Positive and Negative Reinforcement



Reward Deficit Disorder





Avoid Stigmatizing Language

Avoid these terms...	Use these instead...
Addict, user, drug abuser, junkie	Person with opioid use disorder or person with opioid addiction, patient
Addicted baby	Baby born with neonatal abstinence syndrome
Opioid abuse or opioid dependence	Opioid use disorder
Problem	Disease
Habit	Drug addiction
Clean or dirty urine test	Negative or positive urine drug test
Opioid substitution or replacement therapy	Opioid agonist treatment
Relapse	Return to use
Treatment failure	Treatment attempt
Being clean	Being in remission or recovery
Polysubstance abuse	Just list them!



The Addictionary

- ▶ <https://www.recoveryanswers.org/addiction-ary/>

Thank you for joining us today.
We appreciate your participation and hope
to see you at the **NEXT ECHO Session:**
January 28, 2021 from 12pm -1 PM

You will be receiving a follow up survey that we hope you will complete to help us improve. If you are requesting continuing education credits, you will be required to complete the survey to receive your CEs.

háv'aa • way dankoo • gunalchéesh
tsin'aen • quyanaa • maasee' • quyana • 'awa'ahdah • quyanaa • quyanaa • quyanaa • quyanaa • quyanaa
igamsiqanaghalek • qağasakung • mahsi' chin'an • 'awa'ahdah • quyanaa • quyanaa • quyanaa • quyanaa • quyanaa
háv'aa • way dankoo • gunalchéesh • tsin'aen • quyanaa • maasee' • quyana • 'awa'ahdah • quyanaa • quyanaa • quyanaa
qagaasakung • qağasakung • qağasakung • qağasakung • qağasakung • qağasakung • qağasakung • qağasakung • qağasakung
háv'aa • way dankoo • gunalchéesh • tsin'aen • quyanaa • maasee' • quyana • 'awa'ahdah • quyanaa • quyanaa • quyanaa
igamsiqanaghalek • qağasakung • mahsi' chin'an • 'awa'ahdah • quyanaa • quyanaa • quyanaa • quyanaa • quyanaa
qagaasakung • qağasakung • qağasakung • qağasakung • qağasakung • qağasakung • qağasakung • qağasakung • qağasakung
háv'aa • way dankoo • gunalchéesh • tsin'aen • quyanaa • maasee' • quyana • 'awa'ahdah • quyanaa • quyanaa • quyanaa
igamsiqanaghalek • qağasakung • mahsi' chin'an • 'awa'ahdah • quyanaa • quyanaa • quyanaa • quyanaa • quyanaa
qagaasakung • qağasakung • qağasakung • qağasakung • qağasakung • qağasakung • qağasakung • qağasakung • qağasakung

