

# SOUTHEAST

## Domestic & Sexual Violence Resource Guide



### EMERGENCY CONTACTS

Police Department: 911 or contact your local dept.

#### Regional OCS Offices

Juneau: (907) 465-1650 or Fax: (907) 465-1668

Sitka: (907) 747-2802 or 1-800-478-8605

Fax: (907) 747-5542

Petersburg: (907) 772-3565

Craig: (907) 826-3266 or Fax: (907) 826-3807

Ketchikan: (907) 225-6611 or Fax: 907-247-6611

Southeast ICWA Specialist: (907) 465-8158  
9107 Mendenhall Mall RD, STE 300 Juneau, AK 99801

State Troopers or call your community's VPSO

Juneau: (907) 465-4000 or Fax: (907) 465-3333

Cordova: (907) 424-3184 or Fax: (907) 424-5454

Haines: (907) 766-2552 or Fax: (907) 766-3265

Hoonah: (907) 945-3620 or Fax: (907) 945-3570

Ketchikan: (907) 225-5118 or Fax: (907) 225-6568

Petersburg: (907) 772-3983 or Fax: (907) 772-3906

Sitka: (907) 747-3254 or Fax: (907) 747-7912

Wrangell: (907) 874-3215 or Fax: (907) 874-3241

Yakutat: (907) 784-3206 or Fax: (907) 784-3523

### RESOURCES

**Not sure where to turn? Call 211 or 1-800-478-2221**

#### Cordova Family Resource Center

PO BOX 863 Cordova AK 99574

24-HOUR CRISIS LINE: (907) 424-4357 (local)

Office: (907) 424-5674

Email: CFRC@CTCAK.NET

#### Helping Others Prevent Emergencies (H.O.P.E.)

404 Spruce St, Craig, AK 99921

24-HOUR CRISIS LINE: (907) 826-4673 (HOPE)

Advocate cell: (907) 401-1611

Office: (907) 826-2581

Email: info@hope4pow.org



ALASKA NATIVE  
TRIBAL HEALTH  
CONSORTIUM

#### DOMESTIC VIOLENCE PREVENTION

3900 Ambassador Dr. Anchorage, AK 99508

dvprevention@anthc.org

# SOUTHEAST

## Domestic & Sexual Violence Resource Guide



### RESOURCES

**Not sure where to turn? Call 211 or 1-800-478-2221**

#### Women In Safe Homes (WISH)

P.O. Box 6552 Ketchikan, AK 99901

**24-HOUR CRISIS LINE:** 1-(800) 478-9474 or (907) 225-9474 (Shelter)

<https://www.wishak.org/>

#### Working Against Violence for Everyone (W.A.V.E.)

PO Box 415, Petersburg, AK 99833

**24-hour Crisis:** (907) 518-0555

Office: (907) 772-9283

<https://www.petersburgwave.org/>

#### Sitkans Against Family Violence (SAFV)

P.O. Box 6136 Sitka, AK 99835

**24-hour Crisis:** 1-888-486-3625 or (907) 486-3625

Office: (907) 486-6171 [www.kwrcc.org](http://www.kwrcc.org)

#### Sitkans Against Family Violence (SAFV)

P.O. Box 6136 Sitka, AK 99835

**24-HOUR CRISIS LINE:** (907) 747-6511 or 1-800-478-6511

Office: (907) 747-3370

Email: [info@safv.org](mailto:info@safv.org)

<https://www.safv.org/>

#### Becky's Place

PO Box 1506 Haines, AK 99827

**Cell:** (907) 303-0076

Email: [beckysplace.haines@gmail.com](mailto:beckysplace.haines@gmail.com)

<http://www.beckysplacehavenofhope.org>

#### Aiding Women in Abuse and Rape Emergencies (AWARE)

PO Box 20809, Juneau, AK. 99802

**24-HOUR CRISIS LINE:** (907) 586-1090 or 1-800-478-1090

Office: (907) 586-6623

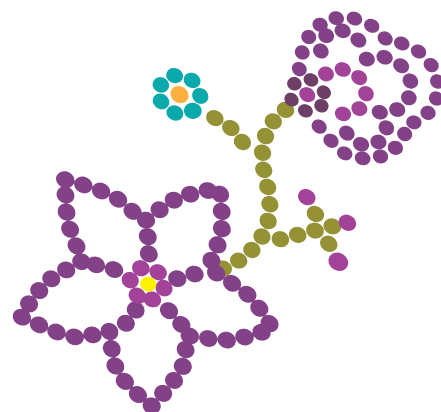
<https://awareak.org/>

#### Central Council Tlingit & Haida Indian Tribes of Alaska

320 W. Willoughby Ave., Suite 300, Juneau, AK, 99801

Office: (907) 586-1432 or 1-800-344-1432

<http://www.ccthita.org/>



ALASKA NATIVE  
TRIBAL HEALTH  
CONSORTIUM

DOMESTIC VIOLENCE PREVENTION

3900 Ambassador Dr. Anchorage, AK 99508

[dvprevention@anthc.org](mailto:dvprevention@anthc.org)