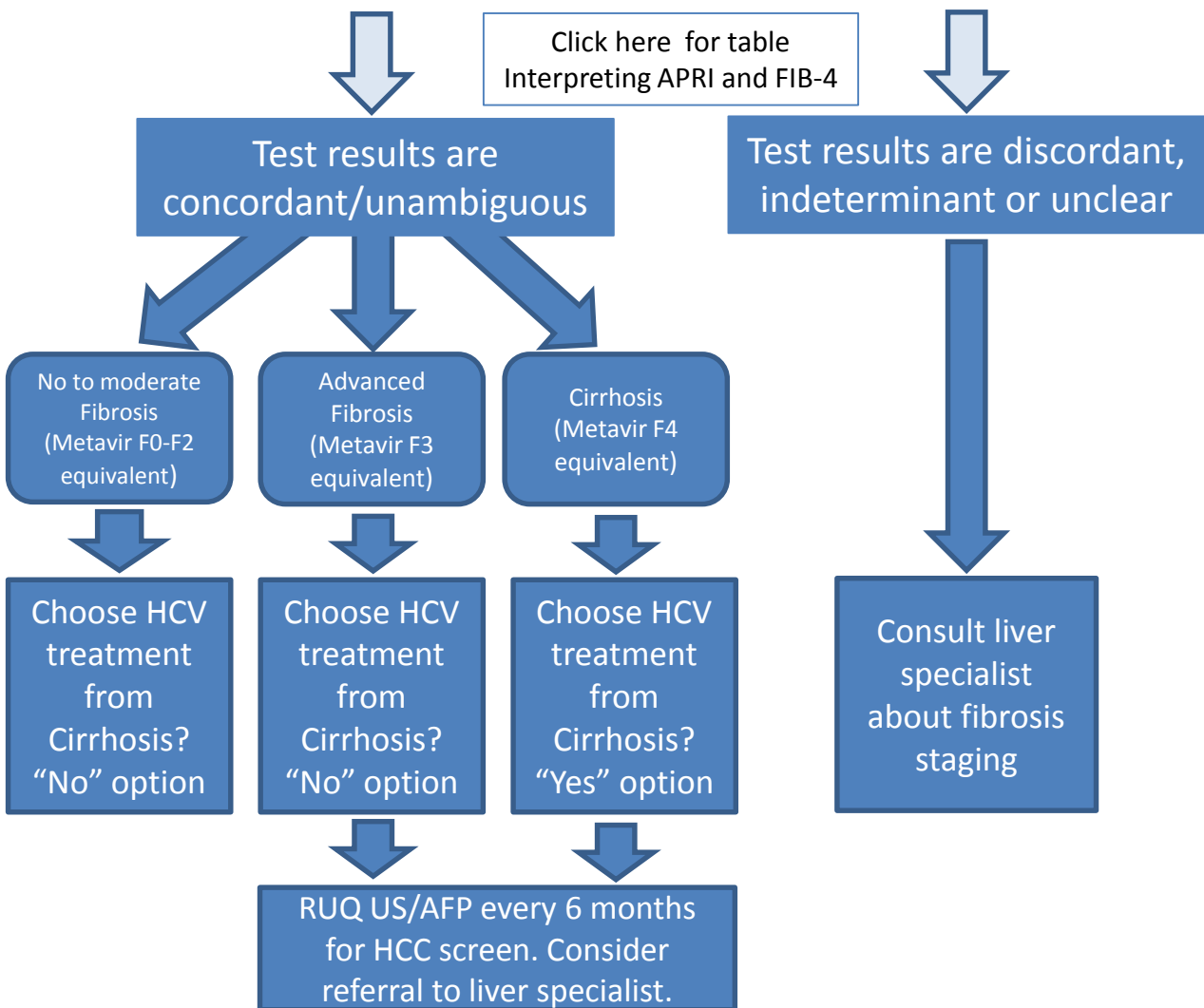


Staging Fibrosis in Untreated HCV

Do not use this to stage fibrosis in those who have been treated and achieved SVR

Calculate [APRI](#), [FIB-4*](#),
and **FibroScan** if available.
If FibroScan not available obtain:
FibroSpect II (Prometheus), FibroSure (LabCorp)
FibroTest (Quest)
or available fibrosis test

Do Not Use APRI or FIB-4 if your patient is currently drinking EtOH (men > 3, women > 2 standard drinks daily), has acute HCV, or if your patient has known or suspected cirrhosis or advanced fibrosis, refer to liver specialist for fibrosis staging



*<https://www.hepatitisc.uw.edu/page/clinical-calculators/>