

An excellent clinical image can make all the difference in a telemedicine consultation. Here are some tips to help make your images the best that they can be.

**SUBJECT:** Should fill the majority of frame. Also keep area free of clutter that may distract from the image.



**SCALE:** Use a ruler or other scale to provide information about the size of the subject.



**NOTE:** Use solid colored background, but avoid white or black. Also avoid textures and reflective surfaces.



**PERSPECTIVE:** Keep camera parallel to the subject surface.



**MACRO:** Use for all close-ups (2"-28"). Avoid zoom when possible as it makes it harder to hold the camera steady.



**FOCUS:** On most cameras, gently squeeze shutter to auto-focus, then depress shutter completely to take the picture.



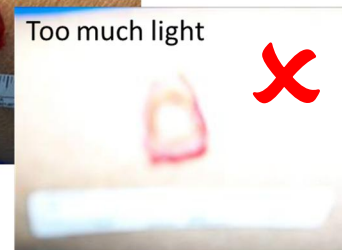
**STEADY THE CAMERA:**

Use your arms as a tripod on a flat surface or against your sides.

Gently squeeze shutter.



**FLASH:** Try photos with and without flash to see which produces the best image.



**GOAL**

- Subject clear ✓
- Focus sharp ✓
- Scale shown ✓
- Well lit ✓
- True color ✓

Great Image!



The Core Standards for Telemedicine Operations as well as the practice guidelines for Teledermatology can be found on ATA's website: <http://www.americantelemed.org>