

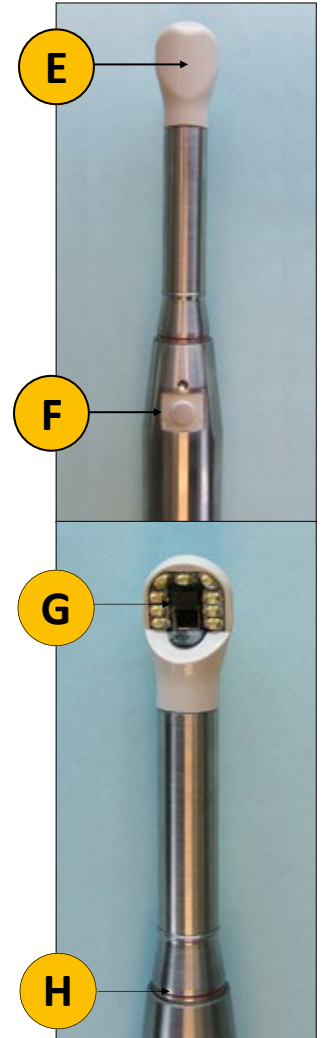
Finding your way around the Evolution Dental Camera:

Main Unit

- A. Power on/off
- B. Power Supply
- C. S-Video
- D. Composite Video

Hand Piece

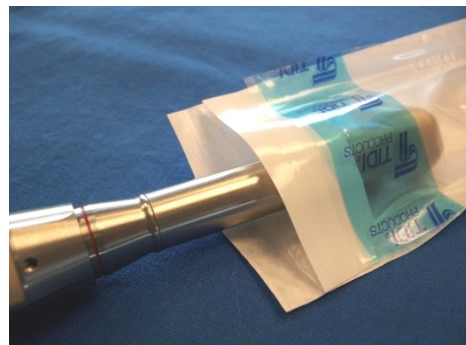
- E. Lens Chamber
- F. Capture Button (disabled)
- G. LED Lens
- H. Reference Line



Applying the Sheath Cover:

1. Keep the LED Lens facing away from you, slide the Hand Piece between the white tabbed plastic and the paper backed plastic portions of the sheath. "Light faces white".
2. Slide the hand piece completely into the sheath.
3. Firmly press the cover against the LED Lens and hold in place for several seconds.
4. Remove tabbed portions of sheath.

Infection Control: Sheath application is required for every patient encounter.

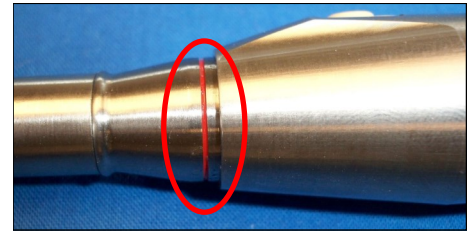


Focusing the Dental Camera:

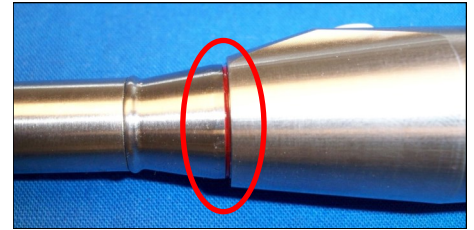
Pre-focusing the dental camera will help you take clear pictures quickly.



Longest focal length.
Use for full face/
mouth images.



Mid-range focal
length. Use for
capturing images of
3-4 teeth.



Shortest focal length.
Use for macro images
of a single tooth
surface.



Imaging Techniques:

- Steady the hand piece using a tongue depressor or your fingers.
- Always apply a new sheath cover to the lens before use
- Adjust the hand piece for the appropriate focal length before placing it in the patients mouth.
- Fine focus the image by moving the camera closer to/farther from the teeth.
- Take several pictures of the object and review them on the case viewer . Save the best and discard the rest.



Cleaning the dental camera:

- The lens area on the camera should only be cleaned with a damp, non-abrasive cloth.
- Do not use alcohol to clean the lens/light area.

Contact your IT department if experiencing any of the following issues:

- Image stuttering or freezing, poor quality images even when camera is very stable.
- Black, green or gray tone on images.