

Live Imaging with Vidyo: This section describes how to use the Versa 4 Exam Camera for live imaging during a video teleconference encounter using Vidyo.





What do you need:

- A. Versa 4 exam camera connected to;
- B. Vidyo Desktop on cart or computer
- C. Video camera, microphone, and speaker



1. Start your Vidyo Session/ Power on the Versa 4 Camera

When ready to share exam camera image in live Vidyo visit

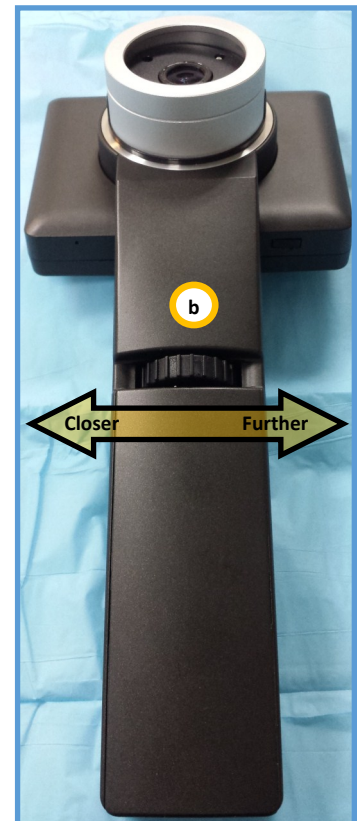
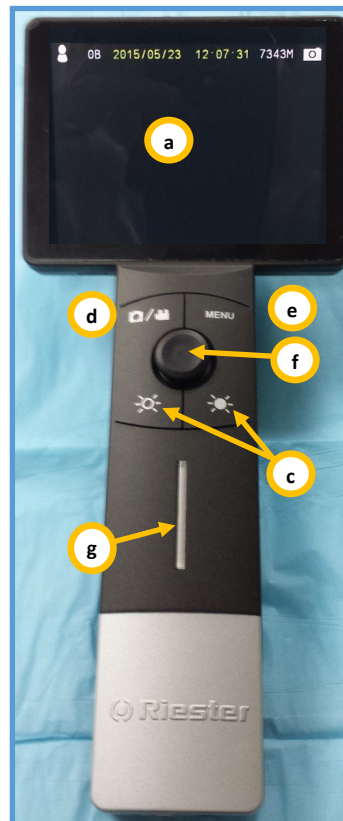
2. Click on the Settings Gear  on the Vidyo control panel
3. Click on the Devices tab  to bring up list of camera options
4. Select the "UVC Camera" device
5. Click on save and close the Settings window
6. Verify that the image on Vidyo is coming from your Versa 4 camera





**Power on the Versa 4
(Hold for 2 seconds)**

Note: You may need to adjust your self view settings in Vidyo to view the exam camera live image

7. Using the Versa 4:
 - a. **LCD Screen** (Displays device's live and stored images)
 - b. **Focus Wheel** (Rotate to adjust focus)
 - c. **Brightness Controls** (Toggles between 10 levels of light brightness)
 - d. **Camera/Video Mode** (Toggles between still images and video recording)
 - e. **Menu Button** (Press to view stored images and to delete images, see back page for details)
 - f. **Pause Image** (Press this to pause image)
 - g. **Light bar** (blue when the power is on, red charging)



When you are finished sharing exam camera image:

8. Click on the Settings Gear on the Vidyo control panel to switch back to primary video camera
9. Power off the handheld camera  and continue Vidyo visit. A black screen doesn't necessarily mean that the device is off. Check that the light bar is not lit blue. 

Interchangeable Lenses:

Exam Cam lens

- Best for general exam at medium distance (8 in.-6 ft.)



Dermatology contact lens

- Capture detail images against the skin
- Built in scale (in mm)
- Polarization filter to remove image glare



Otoscope lens

- Capture intra-ear images
- Uses adult Welch-Allen disposable tips



Changing Lenses:

Remove Lens-Holding the Versa 4 by the handle, gently grasp the lens and turn counterclockwise and lift.

Attach Lens-Line up the black recessed dots (see image) on the lens and camera. Seat the lens into the camera and twist clockwise to lock.

Note: The Versa 4 should always be stored with the Exam Cam lens attached

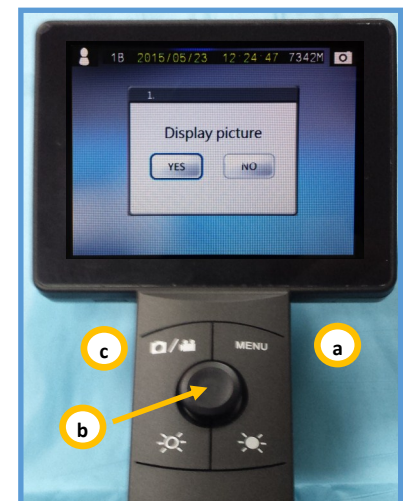


Tips and Tricks:

- During a videoconference session, use the center toggle button to capture an image. This will save a still image to the device as well as freeze the screen image. This helps to reduce camera shake and helps Vidyo render a better image.
- The image that is produced on your Vidyo cart or computer will be of a much higher quality than on the Versa LCD screen. Use the LCD screen as a guide, then review your image on your computer screen.
- Captured images will be stored to the device's internal memory (or micro SD card if equipped). *Remember to delete these images when your session is complete.*
- Switching lenses can cause the Versa 4 to stop sending images to Vidyo– if this happens restart your Versa 4 device

Reviewing Images:

1. Press the Menu button (a) and use the toggle control (b) to select "Yes" on the Display picture selection
2. Press left or right on the toggle control to move between images
3. Press up or down on the toggle control to move between groups of images
4. Press Menu (a) to bring up the delete image option
5. Press the Camera/Video (c) button to return to live image mode



Cleaning and Maintenance:

- Power off the Versa 4 Scope before cleaning it
- Handset and LCD screen can be cleaned using an alcohol swab
- Use soft lens cleaning cloth or tissues for lenses
- Dermatology Contact Lens: Clean the contact plate with alcohol swab before use on each new patient