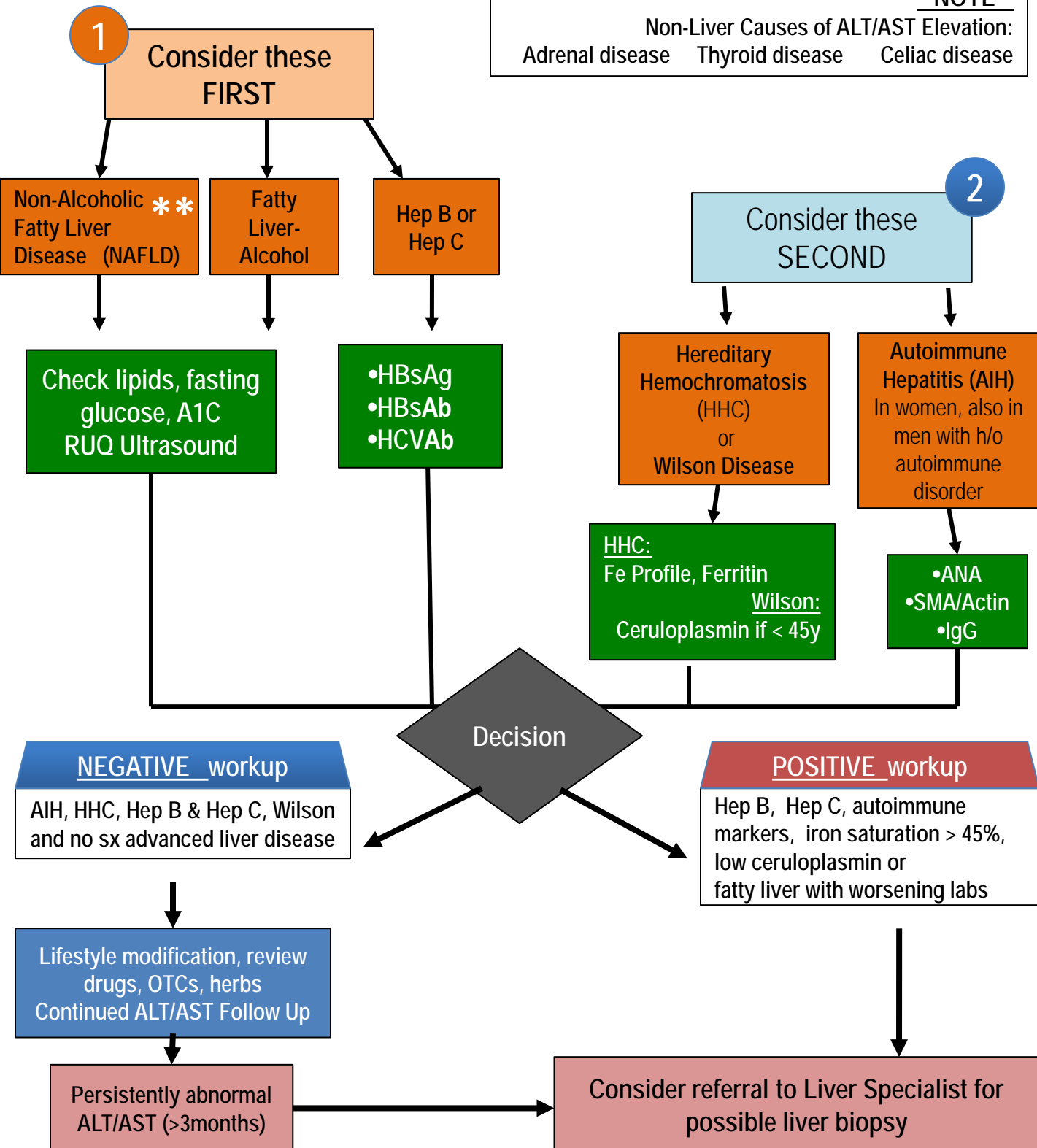


Elevated ALT/AST < 5x Upper Limit of Normal Algorithm

Elevated ALT/AST
On 2 or More Occasions
At Least 3 Months Apart

****NOTE****

Non-Liver Causes of ALT/AST Elevation:
Adrenal disease Thyroid disease Celiac disease



**** NAFLD frequently seen with metabolic syndrome ****