

For more information:

- Turn-over does happen. It's important to inform your grant officer when that is the case so that new staff can be oriented.
- Stuff freezes in the winter - The collection service can not operate during the winter because human waste freezes and can not be sucked up by the haul pump. Because of the ordinance, residents now have a designated location to dispose at.

Lessons Learned:

- Residents know where the designated disposal location is during the winter months.
- Residents are more knowledgeable about the harmful risks associated with exposure to raw human sewage.
- The project helped to create a new job in the community.
- Reduced risk to subsistence food sources.
- Human contact with raw sewage resulting from self-haul has been minimized.
- Health and environmental conditions have improved do to the honey-bucket waste disposal practices being implemented.

Benefits:

- Health and environmental conditions have improved do to the honey-bucket waste disposal practices being implemented.
 - Human contact with raw sewage resulting from self-haul has been minimized.
 - The project helped to create a new job in the community.
 - Residents are more knowledgeable about the harmful risks associated with exposure to raw human sewage.
 - Residents know where the designated disposal location is during the winter months.
- Project Objective:** The Native Village of Newtok received a CEDP grant from ANTHC to start a honey-bucket collection service to allow them to better manage human waste in the village by minimizing human contact, reducing spills within the community, and to stop improper disposal of waste in unapproved locations, all of which greatly increase the threat to human health. A reliable new ATV was purchased to haul the waste collection tank. An ordinance was developed to prohibit the improper disposal of honey-bucket waste and a collection service fee is being considered to help sustain the service. A community meeting was held to educate residents about the new service and about the health risks. The waste hauler has the proper protective gear and can safely collect and transport ALL honey-buck waste to a single designated location for proper disposal.

NATIVE VILLAGE OF NEWTOK

2011 Honey-bucket Sanitation Project

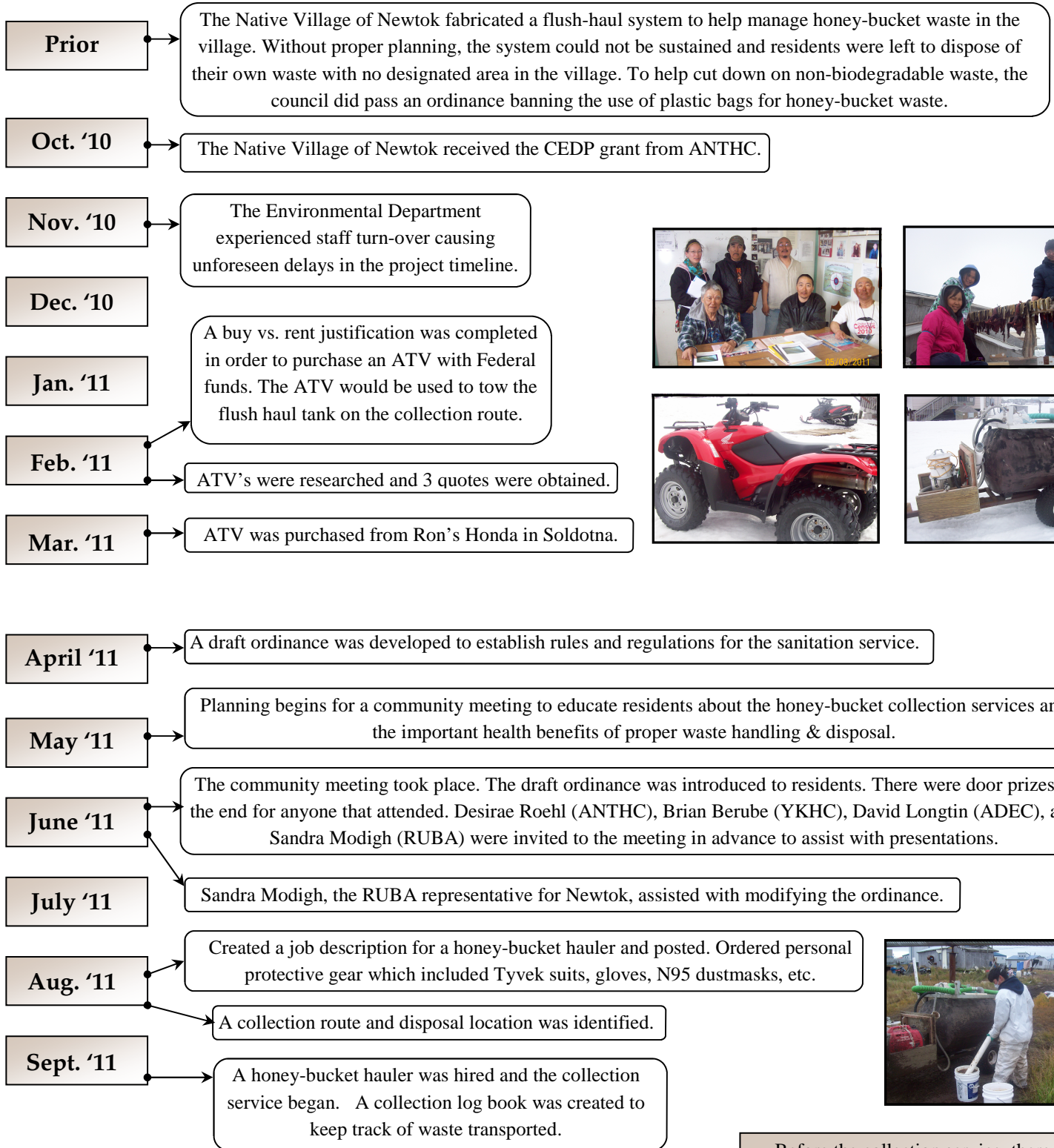


Funding provided by ANTHC through the Community Environmental Demonstration Project Grant Program
made possible with funding from the US EPA Alaska Tribal Multi-Media Grant



* PROJECT TIMELINE *

2011 Community Environmental Demonstration Project



Before the collection service, there was no designated disposal site for human waste. There were numerous locations just outside of the residential boundaries of the village where waste was dumped. The waste collector now disposes of ALL waste in a single location.